

PROPRIETARY DATA
OF ADVANCED ENGINEERED PRODUCTS
NOT TO BE RELEASED WITHOUT
EXPRESSED WRITTEN PERMISSION

INSTALLATION TAB
(CONFIGURATION OPTIONAL)

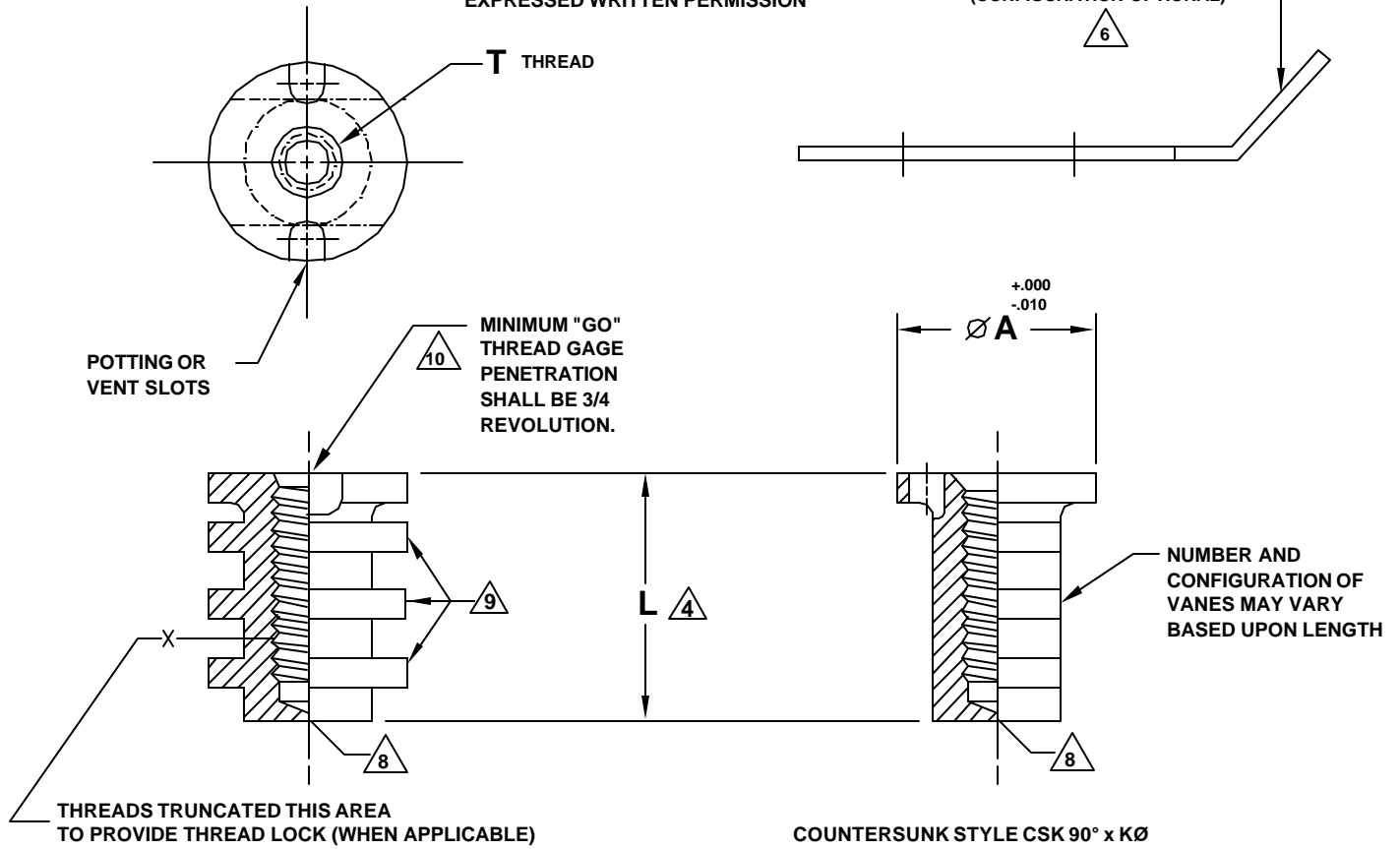


TABLE I

FIRST DASH NO.	T THREAD	Ø A	Ø K	INSTALLATION HOLE SIZE
04	.1120-40UNJC	.451		.452-.457
06	.1380-32UNJC	.451	.162	.452-.457
08	.1640-32UNJC	.451	.210	.452-.457
3	.1900-32UNJF	.451	.250	.452-.457
4X	.2500-20UNJF	.685	.312	.686-.691
4	.2500-28UNJF	.685	.312	.686-.691
5	.3125-24UNJF	.685		.686-.691
6	.3750-24UNJF	.841		.842-.847

U.S. PATENT NO. 4,812,193 AND 4,902,180

UNLESS OTHERWISE SPECIFIED
DIMENSIONS ARE IN INCHES

TOLERANCE ON DECIMALS

.X =
.XX = ±.02
.XXX = ±.010
ANGLES = 2°

CODE IDENT.
08ST2



ADVANCED ENGINEERED PRODUCTS, INC.
1871 NW Gilman Blvd., Issaquah, WA 98027
425/451-0514 Fax 425/454-2932

SCALE	NONE
DATE	04/26/96
DRAWN	JPG
REVISED	11/20/02

**INSERT, POTTED-IN TYPE
BLIND THREADED, SELF-LOCKING
NON-SELF-LOCKING
OPTIONAL COUNTERSUNK**

APPROVED Richard F. Gauron

DWG NO. AEP1036 SHT 1/2




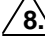

Rev. E

CODE: DASH AFTER BASIC PART NUMBER INDICATES SELF-LOCKING FEATURE
 SUFFIX N AFTER BASIC PART NUMBER INDICATES NONSELF-LOCKING
 FIRST DASH NUMBER INDICATES THREAD SIZE PER TABLE I
 SECOND DASH NUMBER DETERMINES LENGTH IN THOUSANDTHS
 SUFFIX K AFTER FIRST DASH NUMBER INDICATES COUNTERSUNK FEATURE

EXAMPLE OF PART NUMBERS:

AEP1036-3-9 .1900-32UNJF-3B THREAD, .279 LONG, SELF-LOCKING
 AEP1036N3-10 .1900-32UNJF-3B THREAD, .310 LONG, NONSELF-LOCKING
 AEP1036-3K14 .1900-32UNJF-3B THREAD, .434 LONG, SELF-LOCKING, COUNTERSUNK

NOTES, UNLESS OTHERWISE SPECIFIED;

1. MATERIAL: POLYAMIDE-IMIDE
2. FINISH: NATURAL COLOR
3. INSTALLATION HOLE SIZE: (SEE TABLE I)
4.  LENGTH OF INSERT SHALL BE DEFINED BY A 2-DIGIT DASH NO. IN .031 INCREMENTS.
EXAMPLE: -07 = .218, -14 = .434
5. SELECT A LENGTH WHICH ALLOWS A MINIMUM OF .040 CLEARANCE BETWEEN THE BOTTOM OF THE INSERT AND INSIDE SURFACE OF THE PANEL'S BOTTOM SKIN.
6.  AN ADHESIVE BACKED INSTALLATION TAB PT3 WILL BE FURNISHED WITH EACH INSERT.
7.  PART NUMBER & PATENT NUMBER MAY BE MARKED IN THESE LOCATIONS.
8.  INJECTION GATE BURR PERMISSABLE, BURR SHALL NOT INTERFERE WITH ASSEMBLY OF INSERT INTO PANEL
9. LOCKING TORQUE IN ACCORDANCE WITH MIL-N-25027, SEC. 3.8.2.2
10.  MINIMUM "GO" GAGE PENETRATION SHALL APPLY FOR SELF-LOCKING PARTS.

PROPRIETARY DATA
 OF ADVANCED ENGINEERED PRODUCTS
 NOT TO BE RELEASED WITHOUT
 EXPRESSED WRITTEN PERMISSION

© 2002 Advanced Engineered Products, Inc.
 All rights reserved worldwide. Printed in USA

U.S. PATENT NO. 4,812,193 AND 4,902,180

UNLESS OTHERWISE SPECIFIED
 DIMENSIONS ARE IN INCHES

TOLERANCE ON DECIMALS
 .X =
 .XX = ±.02
 .XXX = ±.010
 ANGLES = 2°

CODE IDENT.
 08ST2



ADVANCED ENGINEERED PRODUCTS, INC.
 1871 NW Gilman Blvd., Issaquah, WA 98027
 425/451-0514 Fax 425/454-2932

SCALE	NONE
DATE	04/26/96
DRAWN	JPG
REVISED	11/20/02

**INSERT, POTTED-IN TYPE
 BLIND THREADED, SELF-LOCKING
 NON-SELF-LOCKING
 OPTIONAL COUNTERSUNK**

APPROVED	Richard F. Gauron	DWG NO.	AEP1036 SHT 2/2	Rev.	E
----------	-------------------	---------	-----------------	------	---