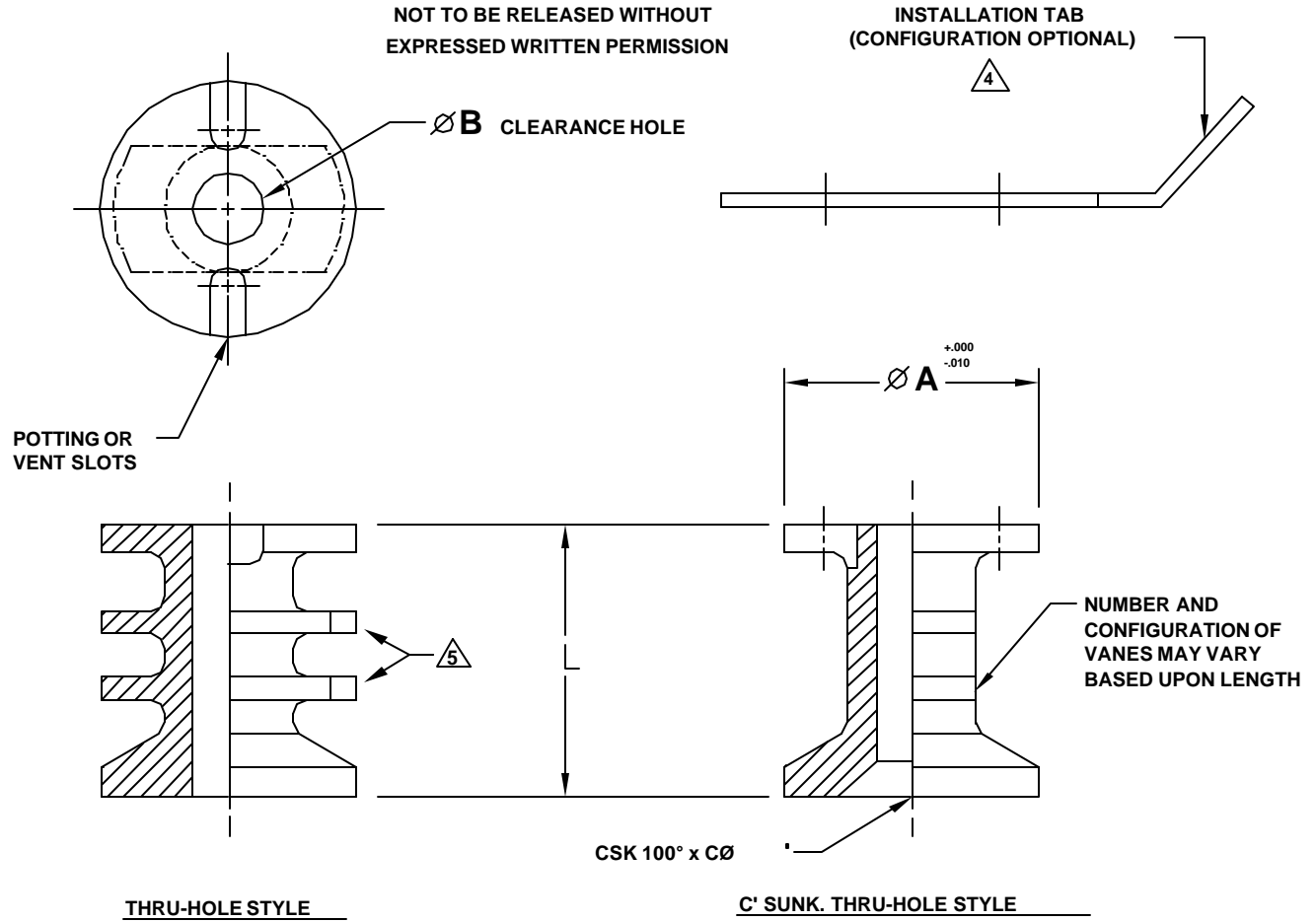


PROPRIETARY DATA  
OF ADVANCED ENGINEERED PRODUCTS  
NOT TO BE RELEASED WITHOUT  
EXPRESSED WRITTEN PERMISSION



THRU-HOLE STYLE

C' SUNK. THRU-HOLE STYLE

TABLE I

FIRST DASH NO.	ØA	ØB	ØC	INSTALLATION HOLE SIZE
06	.560	.140	.280	.561-.566
08	.560	.169	.332	.561-.566
3	.560	.196	.385	.561-.566
4	.685	.257	.507	.686-.691
5	.685	.316	.625	.686-.691
6	.841	.377	.750	.842-.847

TABLE II

SECOND DASH NO.	L
-250	.250
-375	.375
-400	.400
-500	.500
-XXX	.XXX

U.S. PATENT NO. 4,812,193 AND 4,902,180

UNLESS OTHERWISE SPECIFIED  
DIMENSIONS ARE IN INCHES

TOLERANCE ON DECIMALS

.X =  
.XX = ±.02  
.XXX = ±.010  
ANGLES = 2°

CODE IDENT.  
08ST2



ADVANCED ENGINEERED PRODUCTS, INC.  
1871 NW Gilman Blvd., Issaquah, WA 98027  
425/451-0514 Fax 425/454-2932

SCALE	NONE
DATE	04/26/96
DRAWN	JPG
REVISED	04/21/01

INSERT, POTTED-IN TYPE,  
CSK AND THRU CLEARANCE HOLE

APPROVED Richard F. Gauron

DWG NO. AEP1034 SH 1/2

Rev. D

**CODE:**

FIRST DASH NUMBER INDICATES THRU CLEARANCE HOLE SIZE PER TABLE I  
SECOND DASH NUMBER INDICATES LENGTH IN THOUSANDTHS PER TABLE II  
SUFFIX K AFTER FIRST DASH NUMBER INDICATES COUNTERSUNK FEATURE  
SUFFIX W AFTER BASIC PART NUMBER INDICATES WHITE COLOR PART

**EXAMPLE OF PART NUMBERS:**

AEP1034-3-400 .196 THRU CLEARANCE HOLE, .400 LONG  
AEP1034-3K400 .196 THRU CLEARANCE HOLE, COUNTERSUNK, .400 LONG  
AEP1034W3K400 .196 THRU CLEARANCE HOLE, COUNTERSUNK, .400 LONG, WHITE COLOR

**NOTES, UNLESS OTHERWISE SPECIFIED;**

1. MATERIAL: POLYAMIDE-IMIDE (PAI), EXCEPT W CODE = (PAI)
2. FINISH: NATURAL COLOR
3. INSTALLATION HOLE SIZE: (SEE TABLE I)
4. AN ADHESIVE BACKED INSTALLATION TAB PT3 WILL BE FURNISHED WITH EACH INSERT.
5. PART NUMBER AND PATENT NUMBER MAY BE MARKED IN THESE LOCATIONS.

PROPRIETARY DATA  
OF ADVANCED ENGINEERED PRODUCTS  
NOT TO BE RELEASED WITHOUT  
EXPRESSED WRITTEN PERMISSION

© 2002 Advanced Engineered Products, Inc.  
All rights reserved worldwide. Printed in USA

U.S. PATENT NO. 4,812,193 AND 4,902,180

UNLESS OTHERWISE SPECIFIED  
DIMENSIONS ARE IN INCHES

TOLERANCE ON DECIMALS  
.X =  
.XX = ±.02  
.XXX = ±.010  
ANGLES = 2°

**CODE IDENT.**  
**08ST2**



**ADVANCED ENGINEERED PRODUCTS, INC.**  
1871 NW Gilman Blvd., Issaquah, WA 98027  
425/451-0514 Fax 425/454-2932

SCALE	NONE
DATE	04/26/96
DRAWN	JPG
REVISED	04/21/01

**INSERT, POTTED-IN TYPE,  
CSK AND THRU CLEARANCE HOLE**

APPROVED	Richard F. Gauron	DWG NO.	AEP1034 SHT 2/2	Rev.	D
----------	-------------------	---------	-----------------	------	---