

© 2002 Marketing Masters, Inc.
All rights reserved worldwide. Printed in USA

REV.	DESCRIPTION	DATE
A	NEW DRAWING	08-14-02
B	ADDED DIM A DIMS / NEW GRIP RANGE	10-08-02
C	ADDED TOP FLANGE LEAD ANGLE	12-21-01
D	ADDED CRES NUTS FINISH CALLOUT	08-02-01
E	ADDED DIM TOTAL / CHANGED TABLE LTR9	04-23-02

BOTTOM VIEW

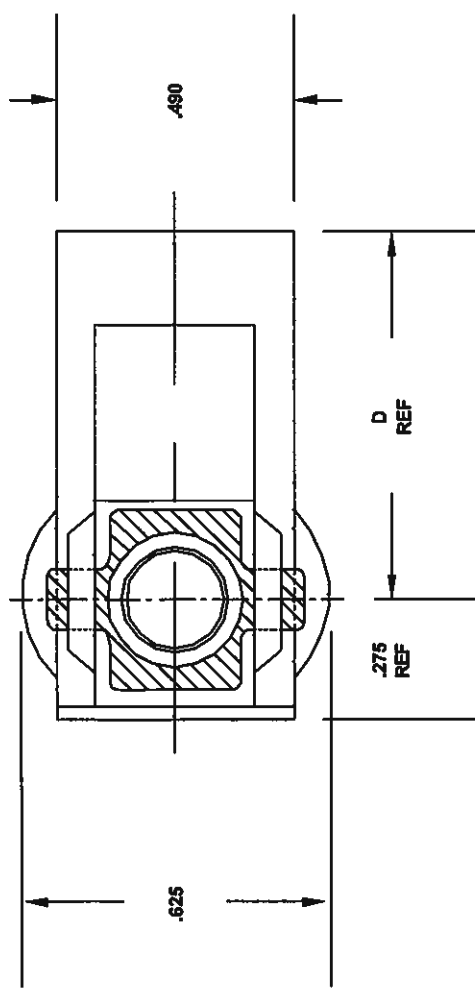


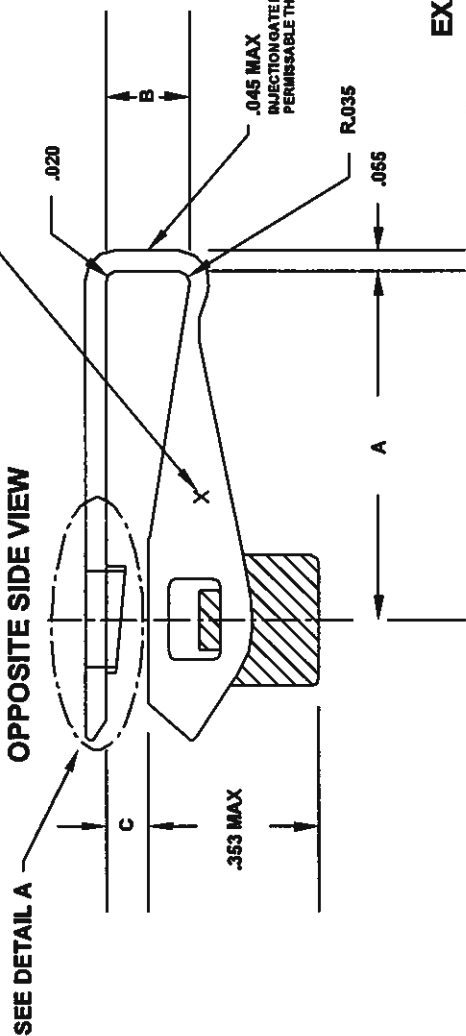
TABLE I

FIRST DASH NUMBER	T	THREAD MIL-S-8879	INSTALLATION & NUT RADIAL FLOAT
04	.1120-40UNJC-3B		0.032
06	.1380-32UNJC-3B		
08	.1640-32UNJC-3B		
3	.1900-32UNJF-3B		

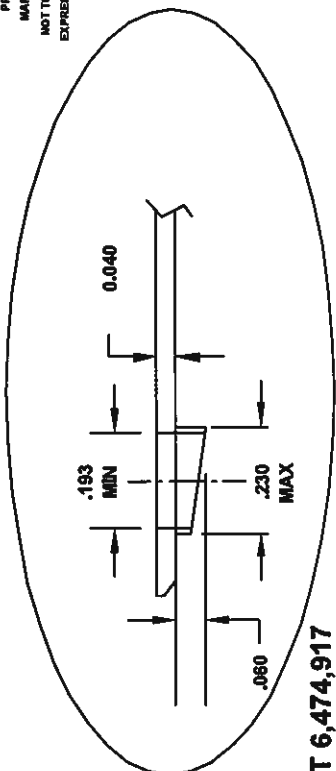
TABLE II

SECOND DASH-NO.	GRIP RANGE		A	B	C	D
	MIN.	MAX.	MAX MIN.	MAX MIN.	MAX MIN.	REF
1	.020	.160	.755 .725	.185 .165	.050 .000	.775
2	.140	.300	.755 .725	.325 .305	.170 .100	.775

OPPOSITE SIDE VIEW



DETAIL A



MATERIAL:
 CLIP: TORLON 4203L (Polyamide-imide) per ASTM D5204
 NUT: STEEL C1050 per AMS5085 - CODE SYMBOL "dash"
 CRES A-286 PER AMS5525 - CODE LETTER "C"
 THREADS per MIL-S-8879
 LOCKING TORQUE & TENSILE per BFS-N-70
 FINISH: STEEL - CAD PLATE PER QQ-P-416, TYPE II, CLASS II
 DRY FILM LUBE PER AS6272, TYPE I
 CRES - CAD PLATE PER QQ-P-416, TYPE I, CLASS II
 DRY FILM LUBE PER AS6272, TYPE I

EXAMPLE PART NO. MM4001 - 3 - 1

PROPRIETARY DATA OF
 MARKETING MASTERS, INC.
 NOT TO BE RELEASED WITHOUT
 EXPRESSED WRITTEN PERMISSION

MANUFACTURED PER MM S.O.P., OCT. 10, 2000 - REV. A



MARKETING MASTERS, INC.
 1871 NW Gilman Blvd., Issaquah, WA 98027
 425/454-5610 Fax 425/454-2932

SCALE	3 : 1
DATE	4-11-2000
DRAWN	JPG
REVISED	4-23-2002
APPROVED	

TOLERANCES ON DECIMALS
 .X = ± .03
 .XX = ± .020
 .XXX = ± .010
 ANGLES = ± 0° 30'

UNLESS OTHERWISE SPECIFIED
 DIMENSIONS ARE IN INCHES

**CLIP NUT,
 SELF-LOCKING,
 COMPOSITE**

US PATENT 6,474,917

DWG. NO. MM4001 SHT. 1 of 1 REV. E