

PROPRIETARY DATA
OF MARKETING MASTERS, INC.
NOT TO BE RELEASED WITHOUT
EXPRESSED WRITTEN PERMISSION

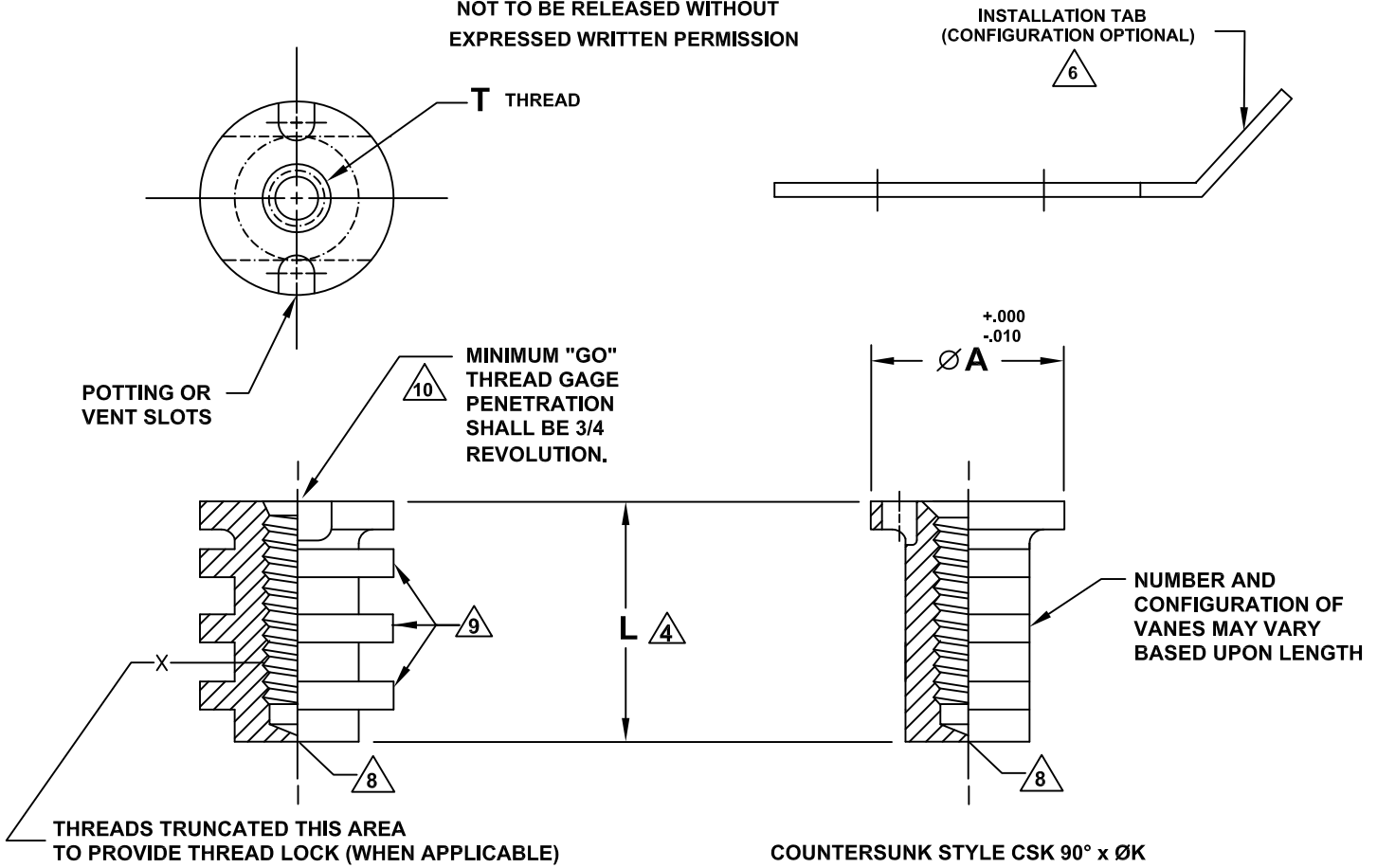


TABLE I

| FIRST DASH NO. | T THREAD | Ø A | Ø K | INSTALLATION HOLE SIZE |
|----------------|------------------|------|------|------------------------|
| 04 | .1120-40UNJC | .451 | | .452-.457 |
| 06 | .1380-32UNJC | .451 | .162 | .452-.457 |
| 08 | .1640-32UNJC | .451 | .210 | .452-.457 |
| 3 | .1900-32UNJF | .451 | .250 | .452-.457 |
| 4X | .2500-20UNJC | .685 | .312 | .686-.691 |
| 4 | .2500-28UNJF | .685 | .312 | .686-.691 |
| M3 | MJ3 X 0.5-4h6h | .451 | | .452-.457 |
| M3.5 | MJ3.5 X 0.6-4h6h | .451 | .162 | .452-.457 |
| M4 | MJ4 X 0.7-4h6h | .451 | .210 | .452-.457 |
| M5 | MJ5 X 0.8-4h6h | .451 | .250 | .452-.457 |
| M6 | MJ6 X 1.0-4h6h | .685 | .312 | .686-.691 |

U.S. PATENT NO. 4,812,193 AND 4,902,180

UNLESS OTHERWISE SPECIFIED
DIMENSIONS ARE IN INCHES

TOLERANCE ON DECIMALS

.XX = ±.02
.XXX = ±.010
ANGLES = 2°

CODE IDENT.
62063

Marketing Masters®

MARKETING MASTERS, INC.
P.O. BOX 675., Issaquah, WA 98027
425.454.5610 Fax 425.454.2932

| | |
|----------|--------------------------|
| SCALE | NONE |
| DATE | 04/26/96 |
| DRAWN | JPG |
| REVISED | 04/08/2013 |
| APPROVED | <i>Richard F. Gauron</i> |

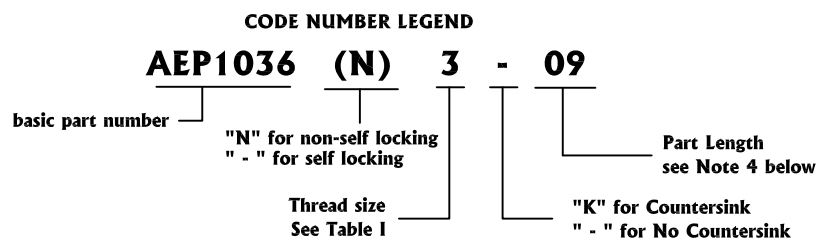
**INSERT, POTTED-IN TYPE
BLIND THREADED, SELF-LOCKING
NON-SELF-LOCKING
OPTIONAL COUNTERSUNK**

DWG NO. **AEP1036 SHT 1/2** Rev. **G**

CODE: DASH AFTER BASIC PART NUMBER INDICATES SELF-LOCKING FEATURE
 SUFFIX N AFTER BASIC PART NUMBER INDICATES NONSELF-LOCKING
 FIRST DASH NUMBER INDICATES THREAD SIZE PER TABLE I
 SECOND DASH NUMBER DETERMINES LENGTH. SEE NOTE 4.
 SUFFIX K AFTER FIRST DASH NUMBER INDICATES COUNTERSUNK FEATURE

EXAMPLE OF PART NUMBERS:

AEP1036-3-09 .1900-32UNJF-3B THREAD, .279 LONG, SELF-LOCKING
 AEP1036N3-10 .1900-32UNJF-3B THREAD, .310 LONG, NONSELF-LOCKING
 AEP1036-3K14 .1900-32UNJF-3B THREAD, .434 LONG, SELF-LOCKING, COUNTERSUNK



NOTES, UNLESS OTHERWISE SPECIFIED;

1. MATERIAL: TORLON (POLYAMIDE-IMIDE) per ASTM D5204
2. FINISH: NATURAL COLOR
3. INSTALLATION HOLE SIZE: (SEE TABLE I)
4. LENGTH OF INSERT SHALL BE DEFINED BY A 2-DIGIT DASH NO. IN .031 INCREMENTS.
EXAMPLE: -07 = .218, -14 = .434
5. SELECT A LENGTH WHICH ALLOWS A MINIMUM OF .040 CLEARANCE BETWEEN THE BOTTOM OF THE INSERT AND INSIDE SURFACE OF THE PANEL'S BOTTOM SKIN.
6. AN ADHESIVE BACKED INSTALLATION TAB PT3 WILL BE FURNISHED WITH EACH INSERT.
7. PART NUMBER & PATENT NUMBER MAY BE MARKED IN THESE LOCATIONS.
8. INJECTION GATE BURR PERMISSABLE, BURR SHALL NOT INTERFERE WITH ASSEMBLY OF INSERT INTO PANEL
9. LOCKING TORQUE IN ACCORDANCE WITH NASM25027, SEC. 3.8.2.2
10. MINIMUM "GO" GAGE PENETRATION SHALL APPLY FOR SELF-LOCKING PARTS.

PROPRIETARY DATA
 OF MARKETING MASTERS, INC.
 NOT TO BE RELEASED WITHOUT
 EXPRESSED WRITTEN PERMISSION

© 2013 Marketing Masters, Inc.
 All rights reserved worldwide. Printed In USA

U.S. PATENT NO. 4,812,193 AND 4,902,180

UNLESS OTHERWISE SPECIFIED
 DIMENSIONS ARE IN INCHES



MARKETING MASTERS, INC.
 P.O. BOX 675., Issaquah, WA 98027
 425.454.5610 Fax 425.454.2932

TOLERANCE ON DECIMALS

.XX = ±.02
 .XXX = ±.010
 ANGLES = 2°

| | |
|---------|------------|
| SCALE | NONE |
| DATE | 04/26/96 |
| DRAWN | JPG |
| REVISED | 04/08/2013 |

**INSERT, POTTED-IN TYPE
 BLIND THREADED, SELF-LOCKING
 NON-SELF-LOCKING
 OPTIONAL COUNTERSUNK**

**CODE IDENT.
 62063**

APPROVED *Richard F. Gauron*

DWG NO. **AEP1036 SHT 2/2**

Rev. **G**