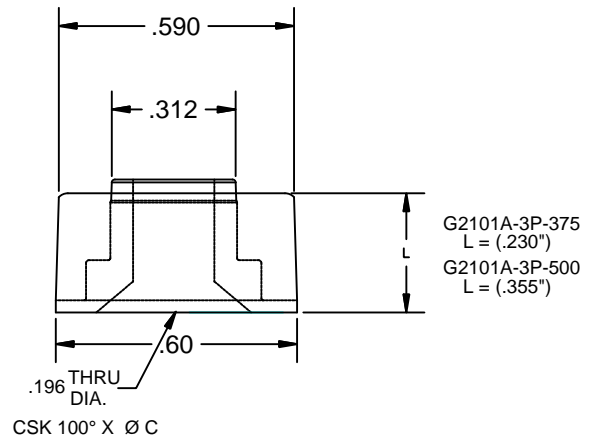
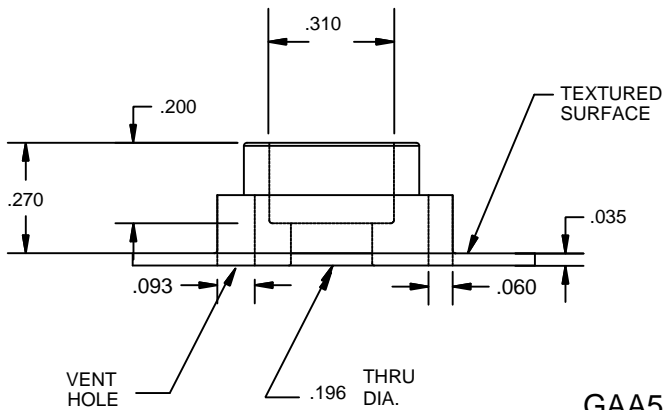
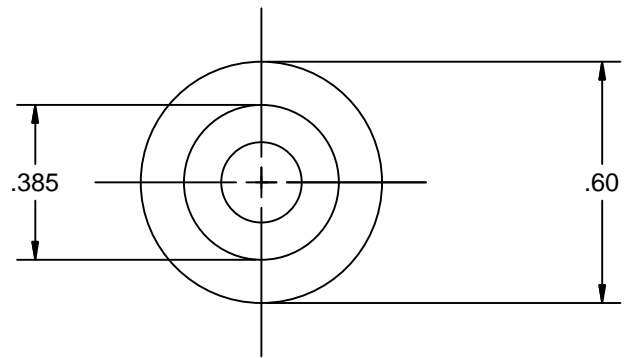
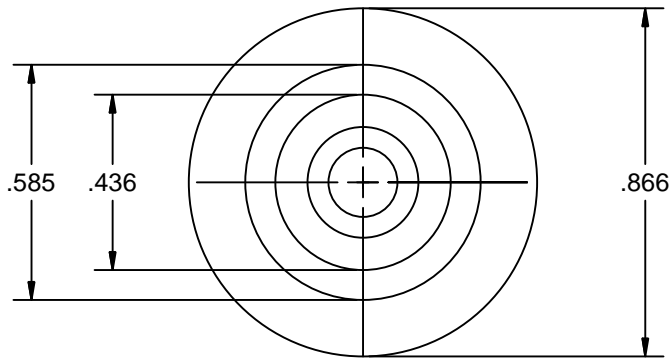


PROPRIETARY DATA  
OF MARKETING MASTERS, INC.  
NOT TO BE RELEASED WITHOUT  
EXPRESSED WRITTEN PERMISSION



G2101A-3P-375  
L = (.230")  
G2101A-3P-500  
L = (.355")

**G2102A-(3)S**  
SLEEVE

**GAA588AF-XXX**  
ASSEMBLY PART NUMBER

**G2101A-3P-XXX**  
PLUG

MATERIAL: POLYAMIDE-IMIDE (TORLON) 4203L

**INSTALLATION:**

INSTALLATION HOLE SIZE SHOULD BE 0.590 in. (15 mm or 19/32")

**NOTES:**

- APPROXIMATE WEIGHT FOR -3S (SLEEVE) IS 1.1 GRAMS.
- INSERT ASSEMBLY SHALL ACCOMMODATE A PANEL THICKNESS DETERMINED BY THE PLUG -XXX CALLOUT IN .000".  
EXAMPLE... G2101A-3P-375 FITS PANEL THICKNESS OF .375".
- ASSEMBLY CALLOUT NO. GAA588AF-XXX, IS SIMPLY DEFINED BY THE PLUG'S -XXX  
EXAMPLE... GAA588AF-375 FITS PANEL THICKNESS OF .375"
- P/N G2102A-3S IS THE SLEEVE USED IN EITHER GAA588AF-375 or GAA588AF-500 SIZE ASSY

**TABLE I** COUNTERSINK & THRU BOLT SIZE

PART NUMBER	(CSK) Ø C	INSTALLATION HOLE SIZE
G2101A-3P-XXX	.385	.590 (19/32")
G2102A-3S	N/A	.590 (19/32")

UNLESS OTHERWISE SPECIFIED  
DIMENSIONS ARE IN INCHES

**TOLERANCE ON DECIMALS**

.X =  
.XX = ±.02  
.XXX = ±.010  
ANGLES = 2°

**CODE IDENT.**  
62063



MARKETING MASTERS, INC.  
P.O. BOX 675, Issaquah, WA 98027  
425/454-5610 Fax 425/454-2932

SCALE	2:1
DATE	1/5/02
DRAWN	JPG
REVISED	05/12/16

**FLUSH HEAD STYLE  
INSERT, PANEL FASTENER  
NON-METALLIC, PLUG, SLEEVE**

APPROVED *Richard F. Gauron*

DWG NO. GAA588AF SHT 1 OF 1

REV. F