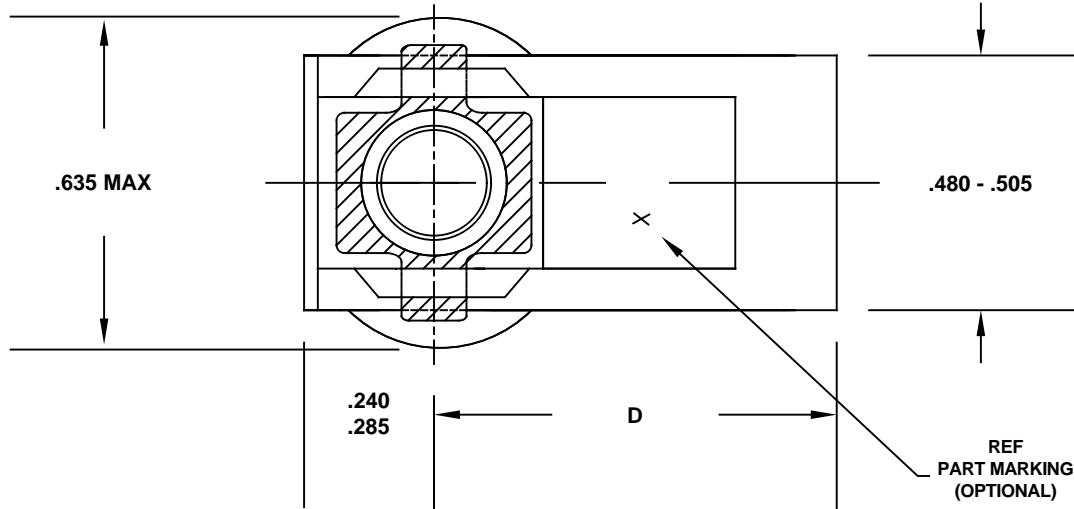


**BOTTOM VIEW**



**TABLE I**

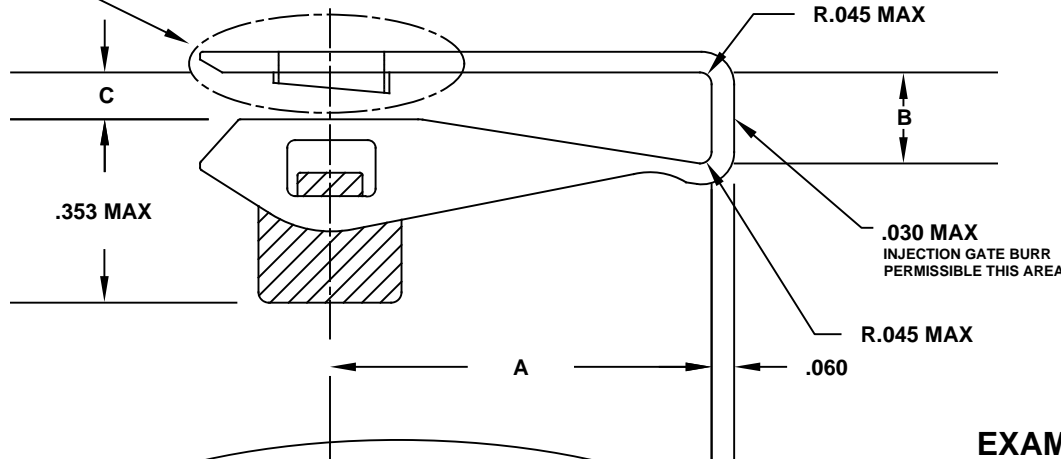
FIRST DASH NUMBER	T THREAD AS-8879	INSTALLATION & NUT RADIAL FLOAT
04	.1120-40UNJC-3B	0.032
06	.1380-32UNJC-3B	
08	.1640-32UNJC-3B	
3	.1900-32UNJF-3B	

**TABLE II**

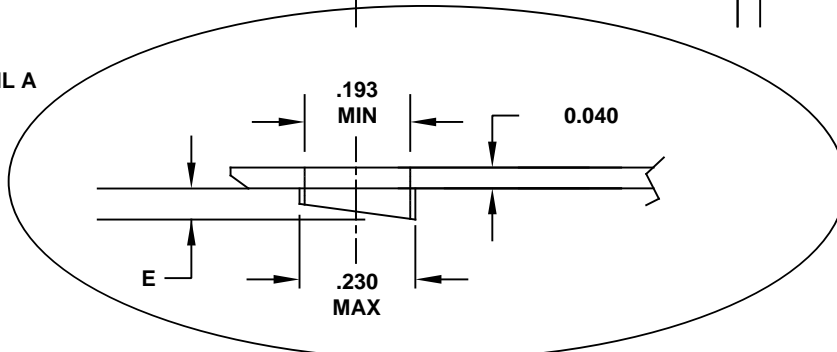
SECOND DASH-NO.	GRIP RANGE		A REF	B	C MAX	D REF	E MAX
	MIN.	MAX.					
1	.020	.160	.745	.175	.060	.795	.060
2	.140	.300	.745	.315	.180	.795	.060
3	.280	.450	.745	.455	.320	.795	.115

SEE DETAIL A

**OPPOSITE SIDE VIEW**



DETAIL A



**MATERIAL:**

CLIP: TORLON 4203L (Polyamide-imide) per ASTM D5204  
 NUT: STEEL C1050 per AMS5085 - CODE SYMBL "dash"  
 CRES A-286 per AMS5525 - CODE LETTER "C / CM"  
 THREADS per AS-8879  
 LOCKING TORQUE & TENSILE per NASM25027

FINISH: STEEL - CAD PLATE per AMS-QQ-P-416, TYPE II, CLASS 2  
 SOLID FILM LUBE per AS5272, TYPE I  
 CRES C - CAD PLATE per AMS-QQ-P-416, TYPE II, CLASS 2  
 SOLID FILM LUBE per AS5272, TYPE I  
 CRES CM - PASSIVATE per AMS 2700, TYPE 2 OR 8  
 SOLID FILM LUBE per AS5272, TYPE I

**EXAMPLE PART NO. MM4001 - 3 - 1**

PROPRIETARY DATA OF  
MARKETING MASTERS, INC.  
NOT TO BE RELEASED WITHOUT  
EXPRESSED WRITTEN PERMISSION

BASIC PART NUMBER: MM4001  
 THREAD SIZE: 3  
 EDGE DISTANCE AND GRIP LENGTH: 1  
 NUT MATERIAL: C = STEEL C1050, CM = A-286 CRES, CAD  
 CM = A-286 CRES, PASS

UNLESS OTHERWISE SPECIFIED  
DIMENSIONS ARE IN INCHES

TOLERANCES ON DECIMALS

.X = ± .03  
 .XX = ± .020  
 .XXX = ± .010  
 ANGLES = ± 0° 30'

CODE IDENT.  
62063

*Marketing Masters*

MARKETING MASTERS, INC.  
1871 NW Gilman Blvd., Issaquah, WA 98027  
(425)454-5610 www.clipnuts.com

SCALE 3:1  
 DATE 4-11-2000  
 DRAWN JPG  
 REVISED 08-17-2016

**CLIP NUT,  
SELF-LOCKING,  
COMPOSITE**

APPROVED Richard F Gauron DWG NO. MM4001 SHT. 1 of 1 REV. K