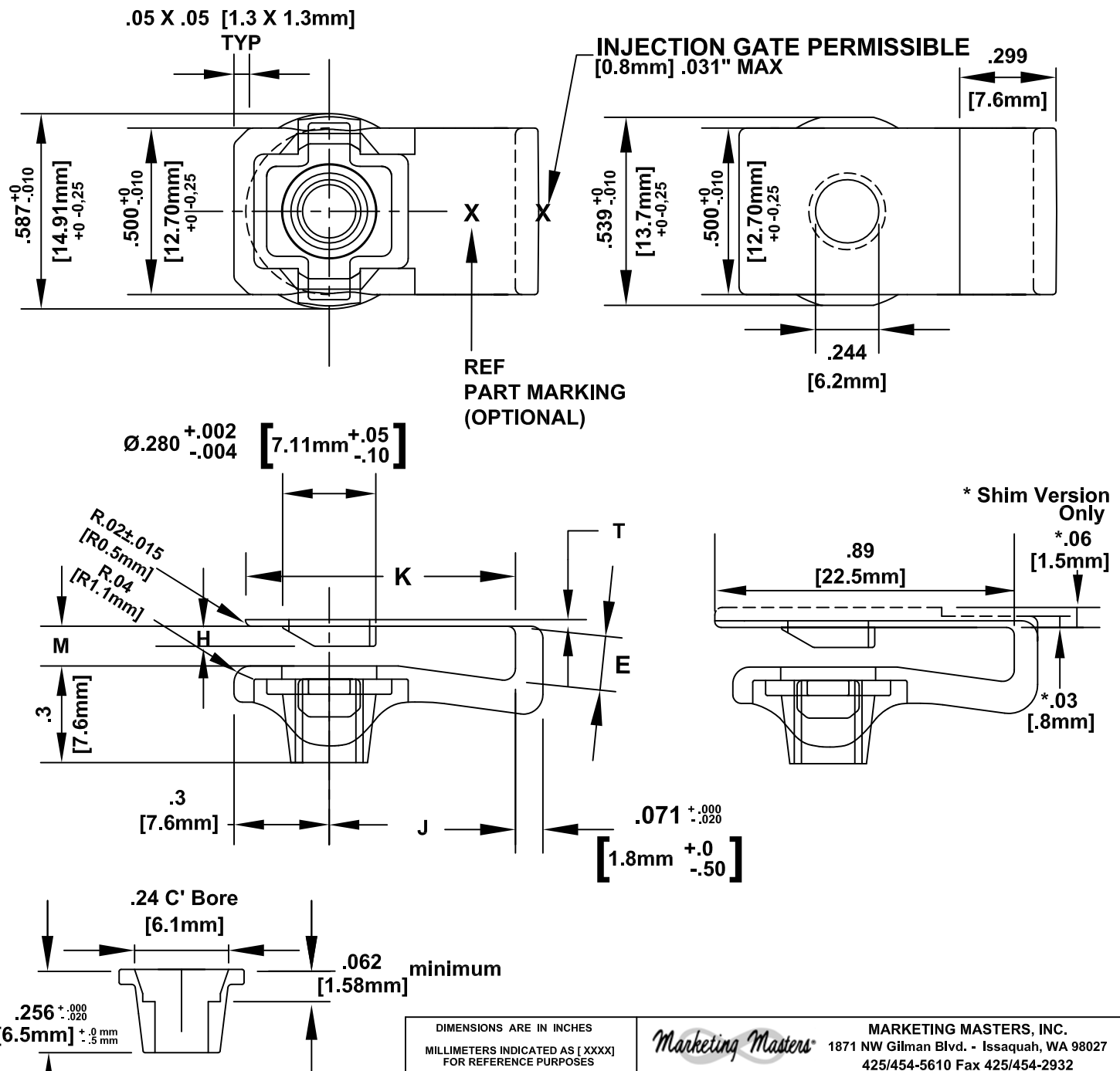


PROPRIETARY DATA OF  
 MARKETING MASTERS, INC.  
 NOT TO BE RELEASED WITHOUT  
 EXPRESSED WRITTEN PERMISSION

© 2013 Marketing Masters, Inc.  
 All rights reserved worldwide.  
 Printed In USA.

**NORMAL VERSION**

**SHIM VERSION & -4 SIZE**



US PATENT 6,474,917 & US PATENT 6,918,725  
 European Patents 1305142 , 601045548, & others  
 May Also Apply.

DIMENSIONS ARE IN INCHES  
 MILLIMETERS INDICATED AS [ XXXX ]  
 FOR REFERENCE PURPOSES  
 UNLESS OTHERWISE STATED  
 TOLERANCES ON INCH DECIMALS  
 .X = ± .03  
 .XX = ± .020  
 .XXX = ± .010  
 ANGLES = ± 0° 30'  
 U.S. MANUFACTURER'S FEDERAL  
 CAGE CODE IDENTIFICATION  
 62063

		MARKETING MASTERS, INC. 1871 NW Gilman Blvd. - Issaquah, WA 98027 425/454-5610 Fax 425/454-2932	
		<b>CLIP NUT,          SELF-LOCKING,          COMPOSITE</b>	
SCALE	NONE	DWG NO.	MM4002
DATE	6-18-2001	SHT.	1 of 2
DRAWN	JPG	REV.	M
REVISED	03-25-2013		
APPROVED	Richard F. Gauron		

**TABLE I**

FIRST DASH NUMBER	THREAD AS 8879	NUT RADIAL FLOAT
08	.1640-32UNJC-3B	0.0325 [0.825mm]
3	.1900-32UNJF-3B	

**TABLE II**

SECOND DASH-NO.	GRIP RANGE		E MIN.	H MAX.	J	K	M		T	MAX MASS (KG/1000 PCS) LB/1000 PCS		
	MIN.	MAX.					MIN.	MAX.				
1	0.02 [0,5mm]	0.138 [3,5mm]	0.15 [3,8 mm]	0.059 [1,5 mm]	0.559 [14,2mm]	0.811 [20,6mm]	0.00 [0,0 mm]	0.079 [2,0 mm]	0.020±.004 [0,51mm±0,10]	(2.2) 4.91		
2	0.138 [3,5mm]	0.256 [6,5mm]	0.26 [6,6 mm]	0.098 [2,5 mm]	0.559 [14,2mm]	0.811 [20,6mm]	0.098 [2,5 mm]	0.22 [5,6 mm]	0.020±.004 [0,51mm±0,10]	(2.3) 5.13		
3	0.248 [6,3mm]	0.374 [9,5mm]	0.378 [9,6 mm]	0.114 [2,9 mm]	0.559 [14,2mm]	0.811 [20,6mm]	0.20 [5,1 mm]	0.343 [8,7 mm]	0.020±.004 [0,51mm±0,10]	(2.4) 5.35		
4	0.02 [0,5mm]	0.138 [3,5mm]	0.15 [3,8 mm]	0.079 [2,0 mm]	0.559 [14,2mm]	0.89 [22,5mm]	0.00 [0,0 mm]	0.079 [2,0 mm]	0.020±.004 [0,51mm±0,10]	(2.2) 4.91		
'S-1' 'S-2' 'S-3' SHIM VERSION						0.89 [22,5mm]			0.060±.004 [1,51mm±0,10]	-1 (2.45) 5.47	-2 (2.52) 5.63	-3 (2.69) 5.95

MATERIAL:

CLIP: NORMAL VERSION

PAI (Polyamide-imide) per ASTM D 5204, PAI000R03A56316E11FB41,TORLON 4203L-HF

'S' SHIM VERSION

PAI (Polyamide-imide) per ASTM D 5204, PAI000R06A66316E11FB41AA002,TORLON 4203LB-HF (COLOR - BLACK)

-4 SIZE VERSION

PAI (Polyamide-imide) per ASTM D 5204, PAI000R06A66316E11FB41AA002,TORLON 4203LG-HF (COLOR - DARK GREEN)

NUT: STEEL C1050 per AMS5085 - CODE INDICATOR "-"

CRES A-286 PER AMS5525 - CODE LETTER "C"

THREADS per AS 8879

LOCKING TORQUE & TENSILE per NASM25027

NUT SURFACE:

STEEL: CAD PLATE PER QQ-P-416, TYPE II, CLASS 2

DRY FILM LUBE PER AS5272, TYPE I

CRES: PASSIVATE PER AMS 2700

DRY FILM LUBE PER AS5272, TYPE I


**EXAMPLE PART NO.**

**MM4002 (S) 3 - 1**

EDGE DISTANCE  
AND GRIP LENGTH  
'C' = CRES A-286 NUT  
'-' = STEEL C1050 NUT  
THREAD SIZE  
'S' = SHIM VERSION  
'-' = NORMAL VERSION

BASIC PART NUMBER

US PATENT 6,474,917 & US PATENT 6,918,725  
European Patents 1305142 , 601045548, & others  
May Also Apply.

DIMENSIONS ARE IN INCHES MILLIMETERS INDICATED AS [XXXX] FOR REFERENCE PURPOSES UNLESS OTHERWISE STATED TOLERANCES ON INCH DECIMALS .X = ± .03 .XX = ± .020 .XXX = ± .010 ANGLES = ± 0° 30'		 MARKETING MASTERS, INC. 1871 NW Gilman Blvd. - Issaquah, WA 98027 425/454-5610 Fax 425/454-2932			
SCALE	NONE	<b>CLIP NUT, SELF-LOCKING, COMPOSITE</b>			
DATE	6-18-2001				
DRAWN	JPG				
REVISED	03-25-2013				
APPROVED	Richard F. Gaaron	DWG NO.	MM4002	SHT. 2 of 2	REV. M